

End of Life Priorities:

NHS England South Central Conference

**Prof Bee Wee
NCD for End of Life Care**

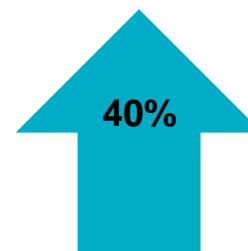
7th June 2017



Despite improvements in health - we still face challenges.



- **We are all living longer.** Over the next 15 years the number of people aged 65 and over is projected to increase by 40%.
- **The number of people with long term conditions will grow as a result of increased life expectancy.** The latest research has found that 58% of those aged 60 and over report having a long term condition; with 25% of over 60s diagnosed with two or more.
- **This is all placing significant pressure on our local health and care systems.** Currently around 70% of the total health and care spend in England is attributed to caring for people with long terms conditions.
- **We also have significant public health challenges.** One in five of those aged over 16 smoke; two thirds of adults are overweight/obese and 45% of those who drink alcohol consume a third of their weekly limit on a single day.



Number of people aged 65 and over will increase from 11.6 million to 16 million.

70% of all inpatient bed days are due to long term conditions.



£££££ 30% of the population accounts for 70% of health and care spend.
£££££

80% Of children who are obese will grow up to be overweight/obese in adulthood.



Why EoLC?

5.6% increase in registered deaths in 2015

Can reduce unnecessary and unwanted admissions

EoLC important to delivery of STP ambitions

Improves early supported discharge to a place of care that meets the needs of the patient

Significant variation therefore opportunity!

Focussing on people at end of life not only improves outcomes and experience for patients, it improves care flow

Improved recognition and optimised services could reduce hospital costs by £180 million!

What works: Nuffield trust

Box 1: Initiatives aimed at controlling or reducing hospital activity **Most positive evidence**

- Improved access of GPs to specialist expertise
- Ambulance and paramedic triage to community
- Condition specific rehabilitation
- Additional clinical support to people in nursing and care homes
- Improved end of life care in the community
- Remote monitoring of people with certain long term conditions
- Support for self care



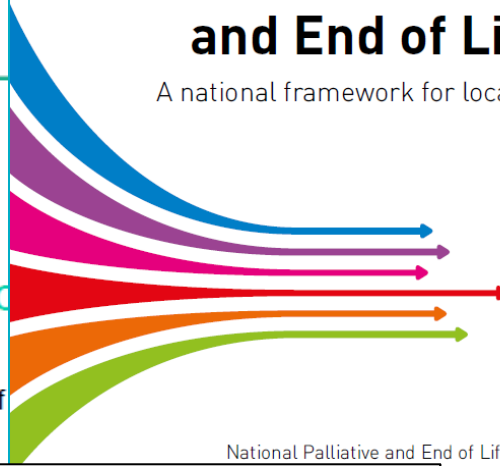
Department of Health

Our Commitment to you for end of life care

The Government Response to the Review of End of Life Care

Ambitions for Palliative and End of Life Care:

A national framework for local action 2015-2020



National Palliative and End of Life Care Partnership

NHS

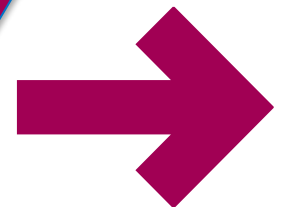


Department of Health

The Government's mandate to NHS England for 2017-18

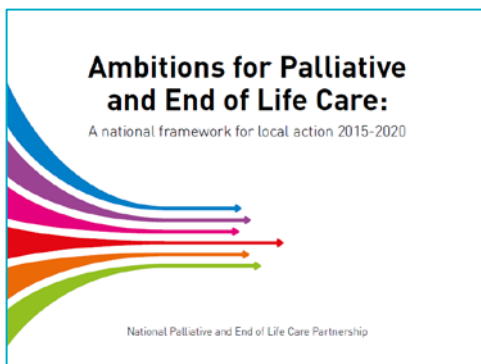
- Have honest discussions about needs and preferences;
- Make informed choices about care, supported by clear and accessible information;
- Develop and document personalised care plan;
- Share personalised care plan with care professionals;
- Involve, to the extent that you wish, family, carers and those important to you; and
- Know who to contact if you need help and advice at any time.

By 2020.... "significantly improve patient choice at end of life care... including ensuring an increase in the number of people able to die in the place of their choice, including at home."



Five Year
Forward View

Next Steps
Plan



Better health, better care, better value

Next Steps Plan

*“It is not, of course, a comprehensive description of all the good things the NHS will be doing – including on maternity and children’s services, diabetes, dementia care, care for people with learning disabilities, tackling inequalities, **end of life care**, and improving quality in challenged providers.”*

Sustainability and Transformation Partnerships

- ‘Place based’ systems for health and care
- More than just the ‘wiring’ behind the scenes
- More formal bringing together of GPs, hospitals, mental health services and social care to keep people healthier for longer and integrate services around the patients who need it most
- Learning from vanguards
- Community participation and involvement

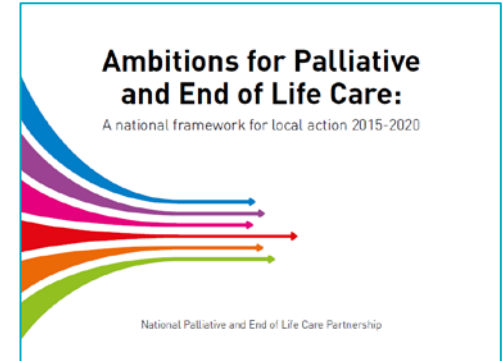


Accountable Care Systems

- STPs – or subset of STP – that can:
 - Agree accountable performance contract
 - Manage funding for defined population
 - Create effective collective decision making and governance structure
 - Horizontal and vertical integrated operation
 - Population health management
 - Residents still able to exercise patient choice (elective care)

‘Support offer’ from EoLC

- Transformation of services
- Financial efficiency
- Prevention and self-management
- Primary and community care
- Urgent and emergency care
- Cancer
- Mental health
- Reducing inequalities in health outcomes



Coordinated system offer
What good looks like
Links to resources
What support is available

Areas of focus for 17/18 and 18/19

Deliverable	Support
Support for STPs and operational plans	<ul style="list-style-type: none">• STP narrative and system wide support offer developed Implementation plan to improve identification of those in last 12 months of life• Metric development including HQIP audit & VOICES• Learning from care models including Social Finance, vanguards etc• Published evidence and examples of palliative and EoLC interventions
EPaCCS	<ul style="list-style-type: none">• Work with NHSE digital and NHS Digital colleagues to develop guidance including case studies and new national capabilities• Promote the use of the enhanced Summary Care Record,
Promote EoLC commitment	<ul style="list-style-type: none">• Rolling series of blogs, case studies and films to be published which focus on patient and staff experience of EoLC• PHB regional leads (keen to engage with the network); PHB case studies and guidance including regional events and webinars to share local best practice (inc lessons learnt)
Sharing intelligence and spreading good practice	<ul style="list-style-type: none">• National monthly webinars to share best practice across the country• National meetings/events to share developments across the system• Field visits on request - for targeted support and help• Knowledge hub – Ambitions website• Reducing inequalities products – i.e. LD quick guide; Homelessness case studies and secure and detained settings charter.