

Healthcare Public Health – what is that?

Population Healthcare for NHS Provider organisations

Professor Chris Packham

A population healthcare lens

- “Our Consultant specialist in Respiratory Medicine sees 400 new patients a year. Does he/she manage the 400 from the local population that most need their attention?

and has the specialist been asked about how the rest of the pathway works?”

A Public Health approach

- Health Protection
- Health Improvement
 - Health Promoting Hospitals
- Healthcare Public Health
 - ‘Population Healthcare’

Population Healthcare

“.....is concerned with maximising the population benefits of healthcare while meeting the needs of individuals and groups, by prioritizing available resources, by preventing diseases and by improving health-related outcomes through design, access, utilisation and evaluation of effective and efficient health and social care interventions and pathways of care” (FPH)

‘Optimal-value pathways’ - Rightcare

Developing a Provider 'Population Healthcare Framework'

- Health Protection
 - Infection control, screening, environmental hazards
- Health Improvement
 - Staff health, 'healthy hospitals', 'Making Every Contact Count'
- Population Healthcare
 - Optimal Value pathways (Rightcare), taking a catchment population overview, facilitating your specialists to help make commissioning decisions

Health Protection – severe mental illness

- Patients with severe mental illness had cancer screening uptake rates in our Trust that were half the national average
- Staff training and working with the hubs
 - Shared pseudo-anonymised data
 - Better access to routes into screening
- 2 years later - almost average

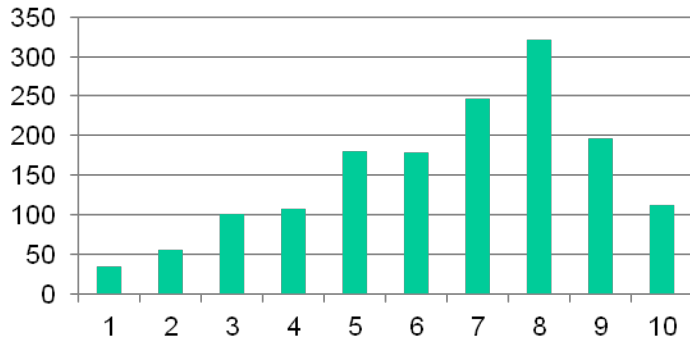
Health Improvement – severe mental illness

- Half of all cigarettes smoked in England are smoked by patients with severe mental illness
- Most of these patients (and all of their families) want to stop
- In-patient smoking rates on wards 80% - up to one third of those patients started smoking whilst inpatients

- Only five out of 77 mental health trusts actively support e-cig use
- Smoke-free sites require substantial staff training - making 'MECC' work needs intense attention to detail around staff training and culture; eg NRT prescribing

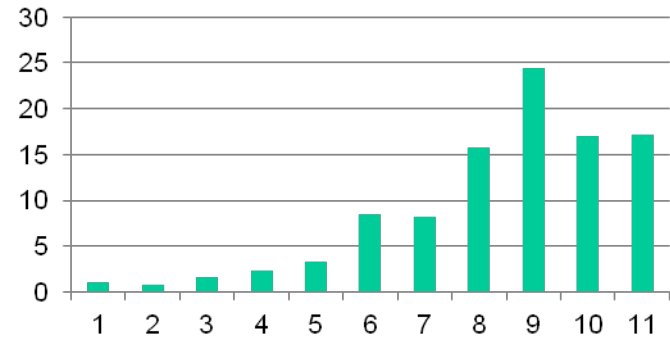
Staff Well being: national measures

our trust

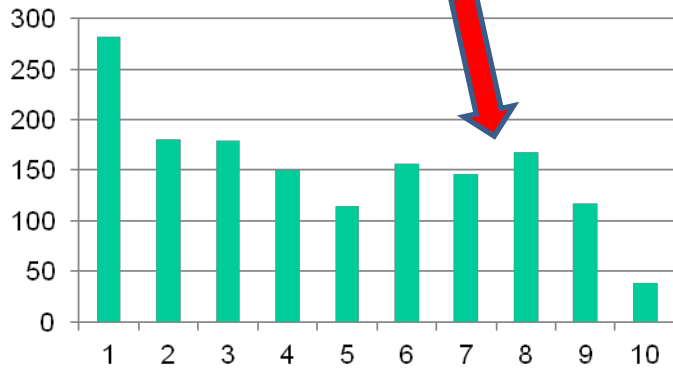


happy
high scores
good

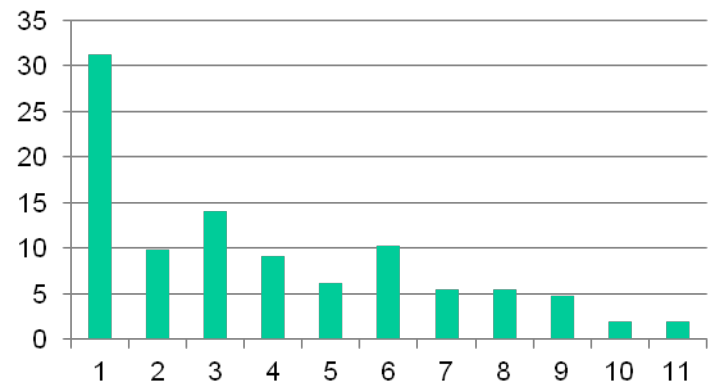
national results



area of concern



anxious
low scores
good



Population healthcare

- Our Consultant specialist in Respiratory Medicine sees 400 new patients a year. Does he/she manage the 400 from the local population that most need their attention?
- *Community prevalence, public awareness raising, GP case identification, using NICE guidance, prioritising both specialist time and balancing resources right across the care pathway*
- *What do we do more of – what do we reduce?*

What more...

- Support the development of a simple population healthcare framework in your providers
- Use specialist public health skills systematically
 - Some of your own clinicians will be brilliant
 - Public health Consultants or trainees
- What doesn't your STP do that it should?
- Think Accountable Care System