

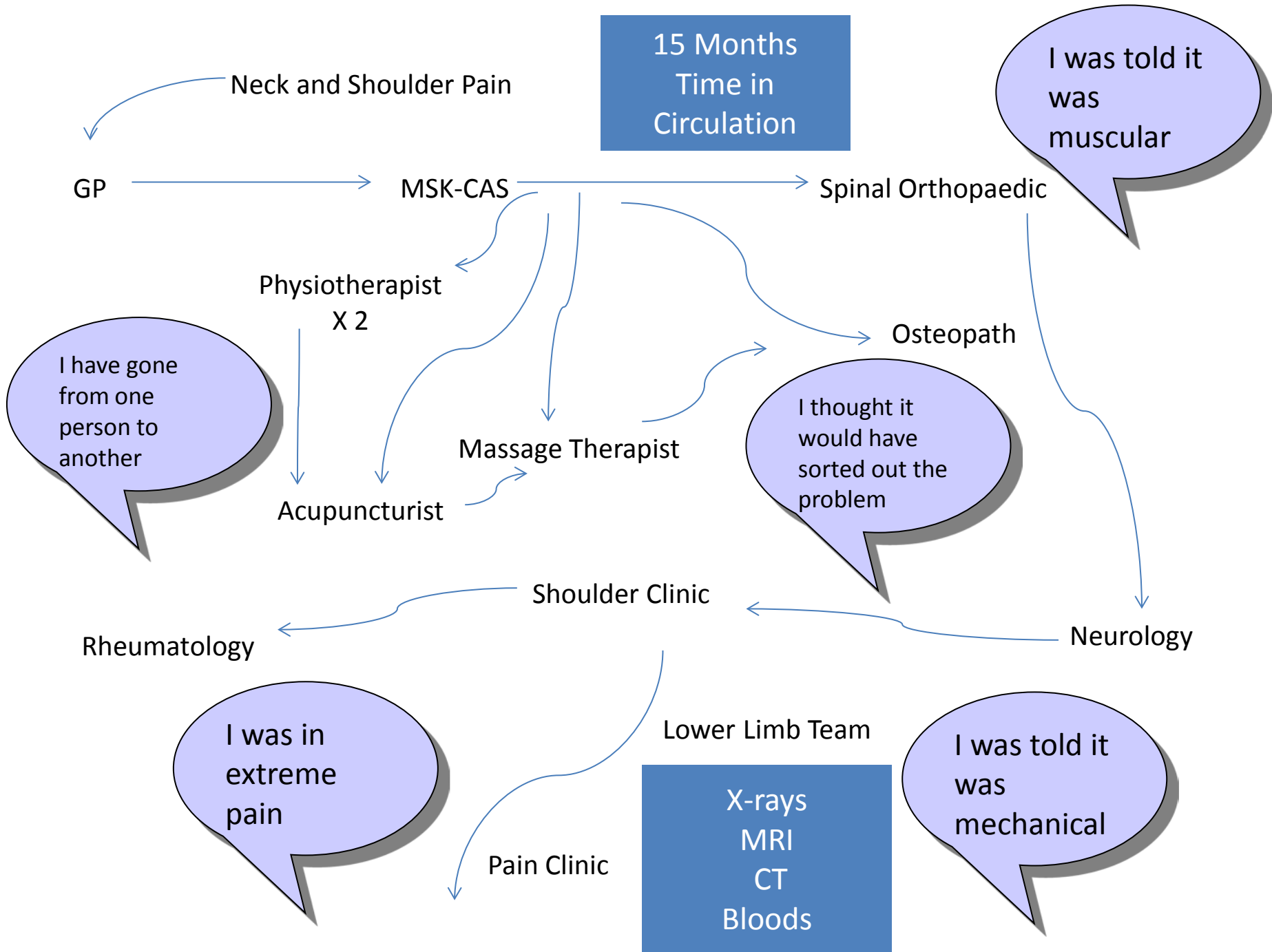
Integrated Pain and Spinal Service (IPASS)

A unique, integrated and collaborative approach to
persistent pain management

Dr Rupert Woolley – GP, Clinical lead, North and West Reading CCG

Dr Antoni Chan – Consultant Rheumatologist, RBH

Anna Wylie – IPASS Manager and ESP



Working Together and Building Strong Partnerships



*North and West Reading
Clinical Commissioning Group*



*Wokingham
Clinical Commissioning Group*



*Berkshire Healthcare
NHS Foundation Trust*



*South Reading
Clinical Commissioning Group*



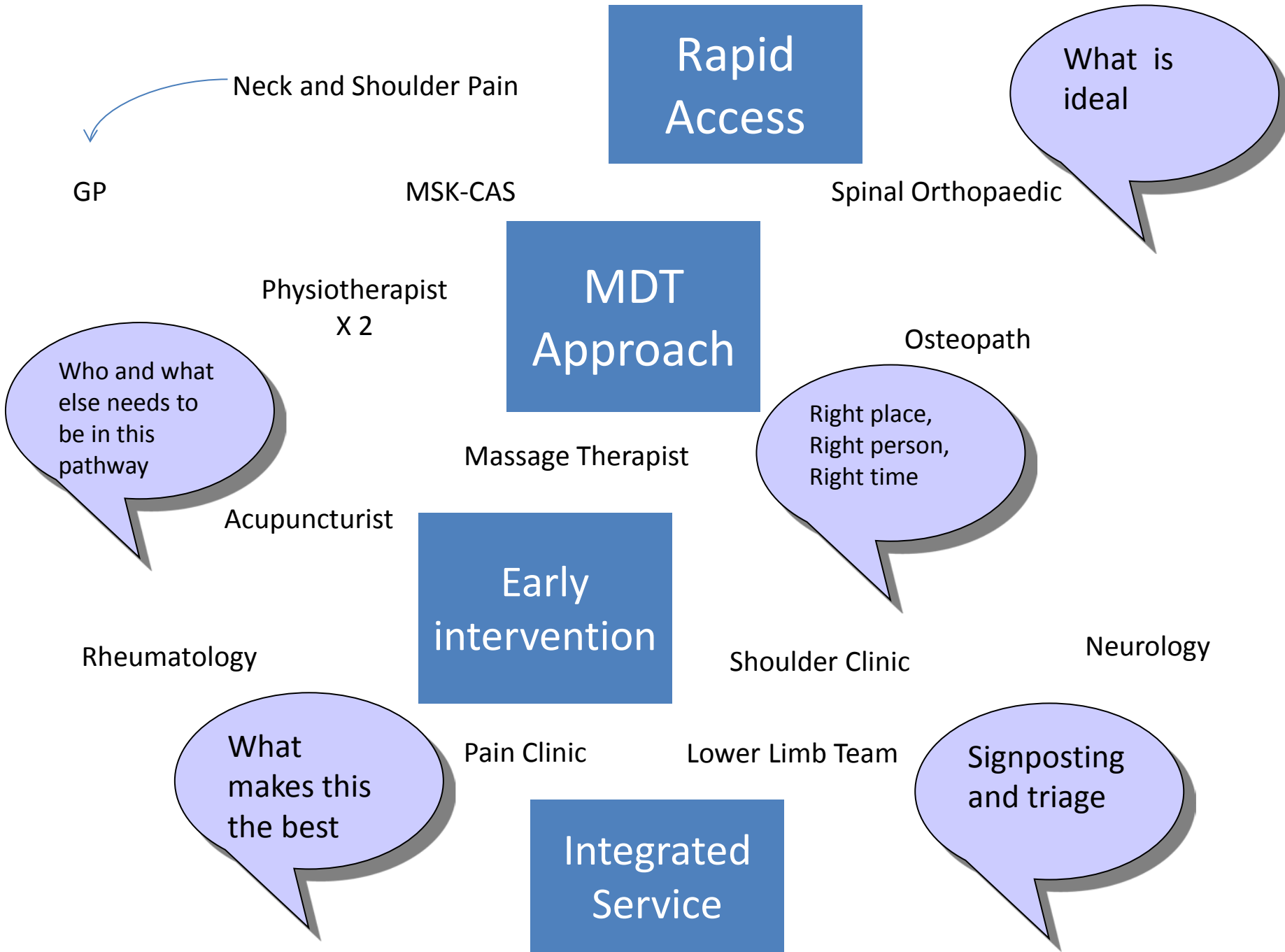
*Newbury and District
Clinical Commissioning Group*



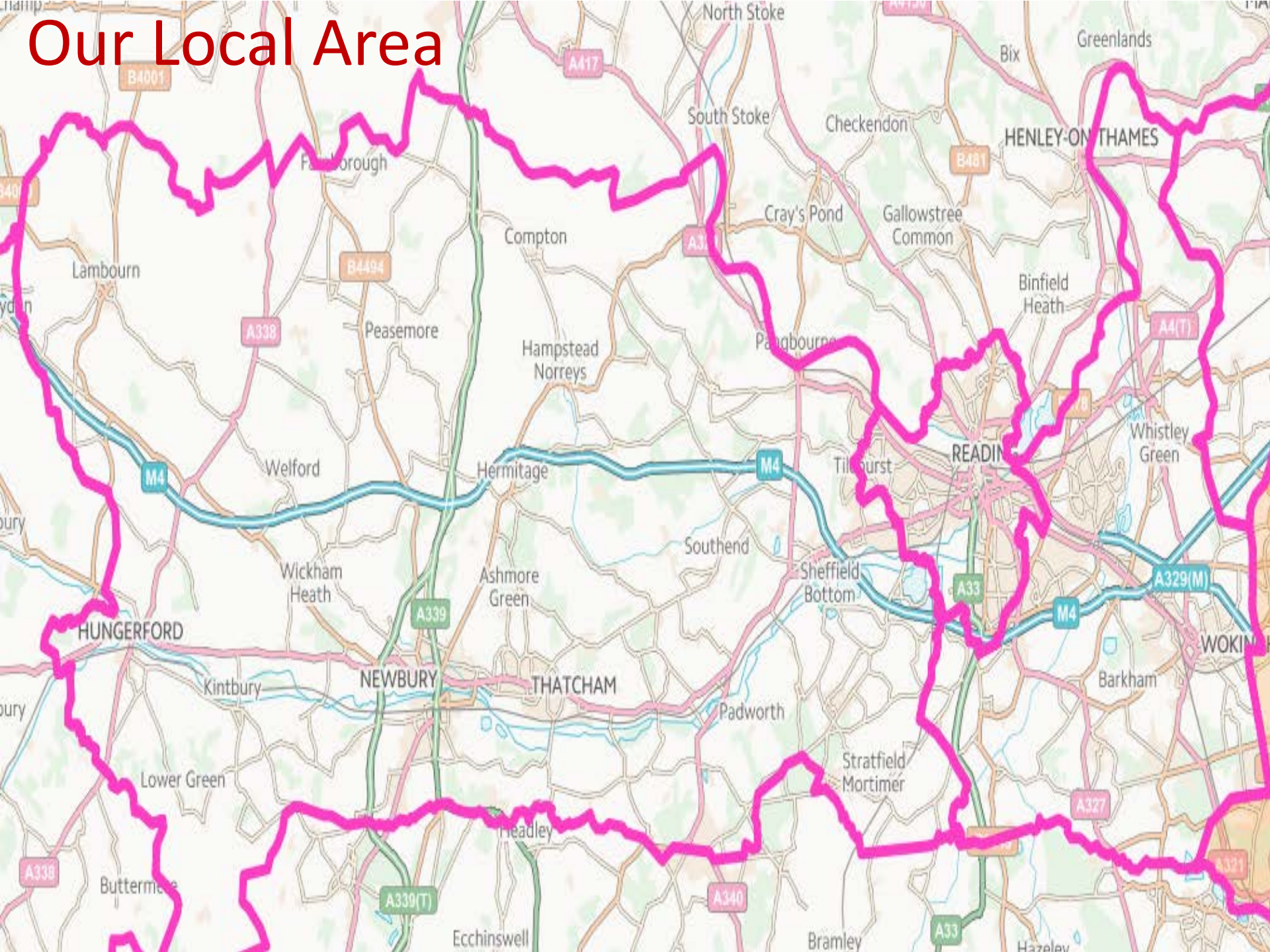
*Royal Berkshire
NHS Foundation Trust*

Ideas creation



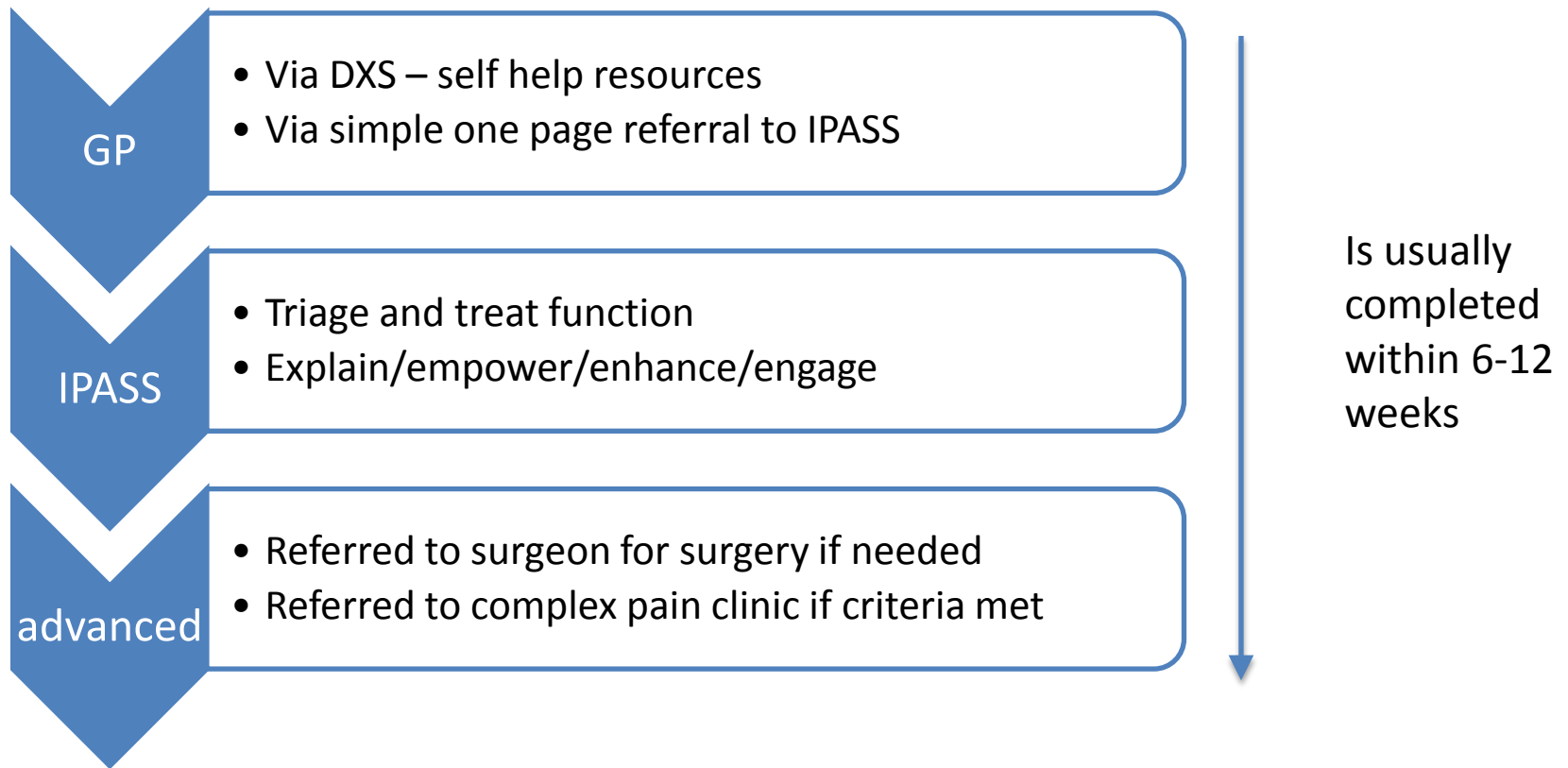


Our Local Area

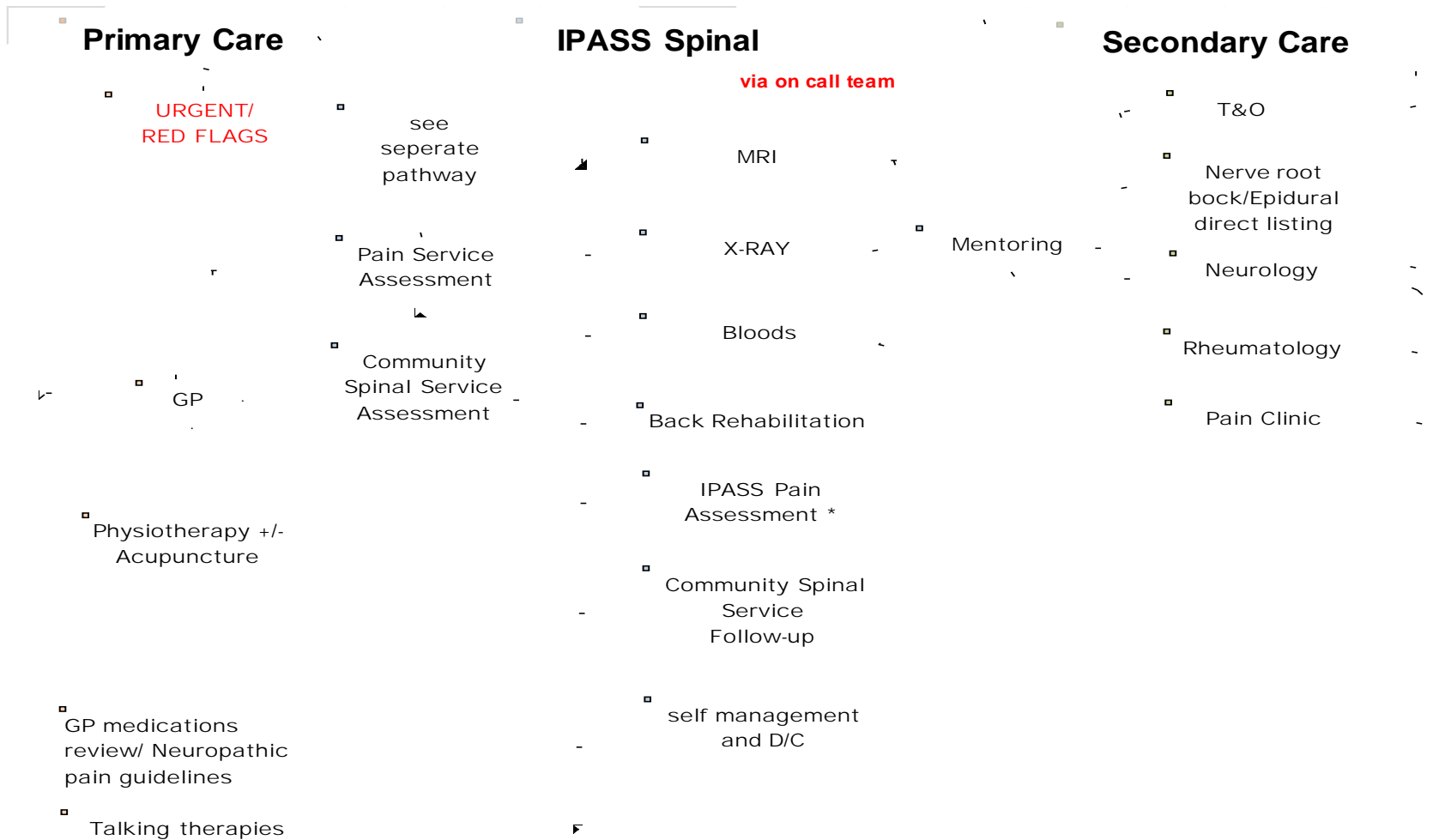


CSS to IPASS: A Patient's Pathway

- 33 year old lady, Episode of Lower Back Pain 4 weeks prior

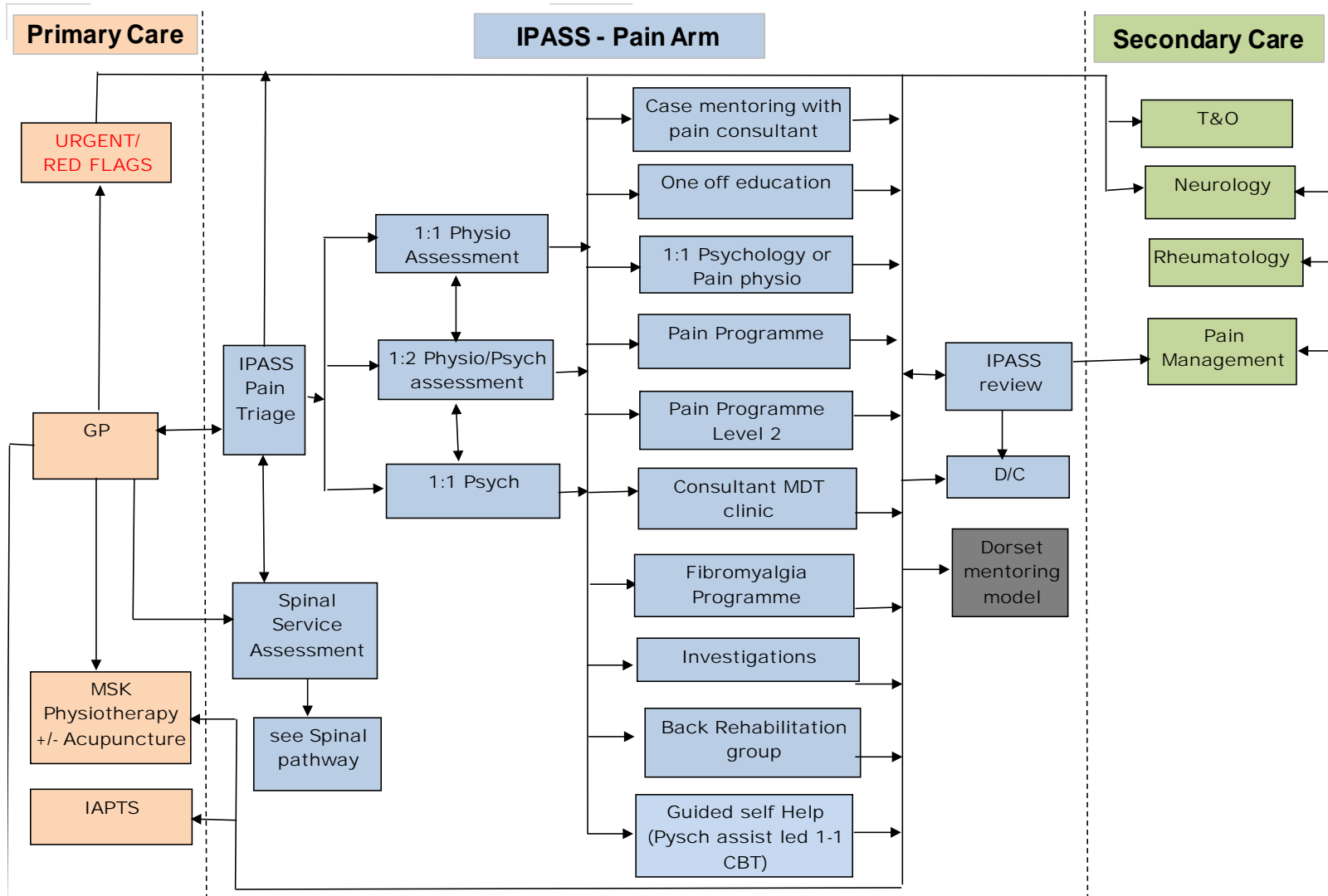


IPASS Spinal Pathway



* see separate process map for IPASS - pain arm

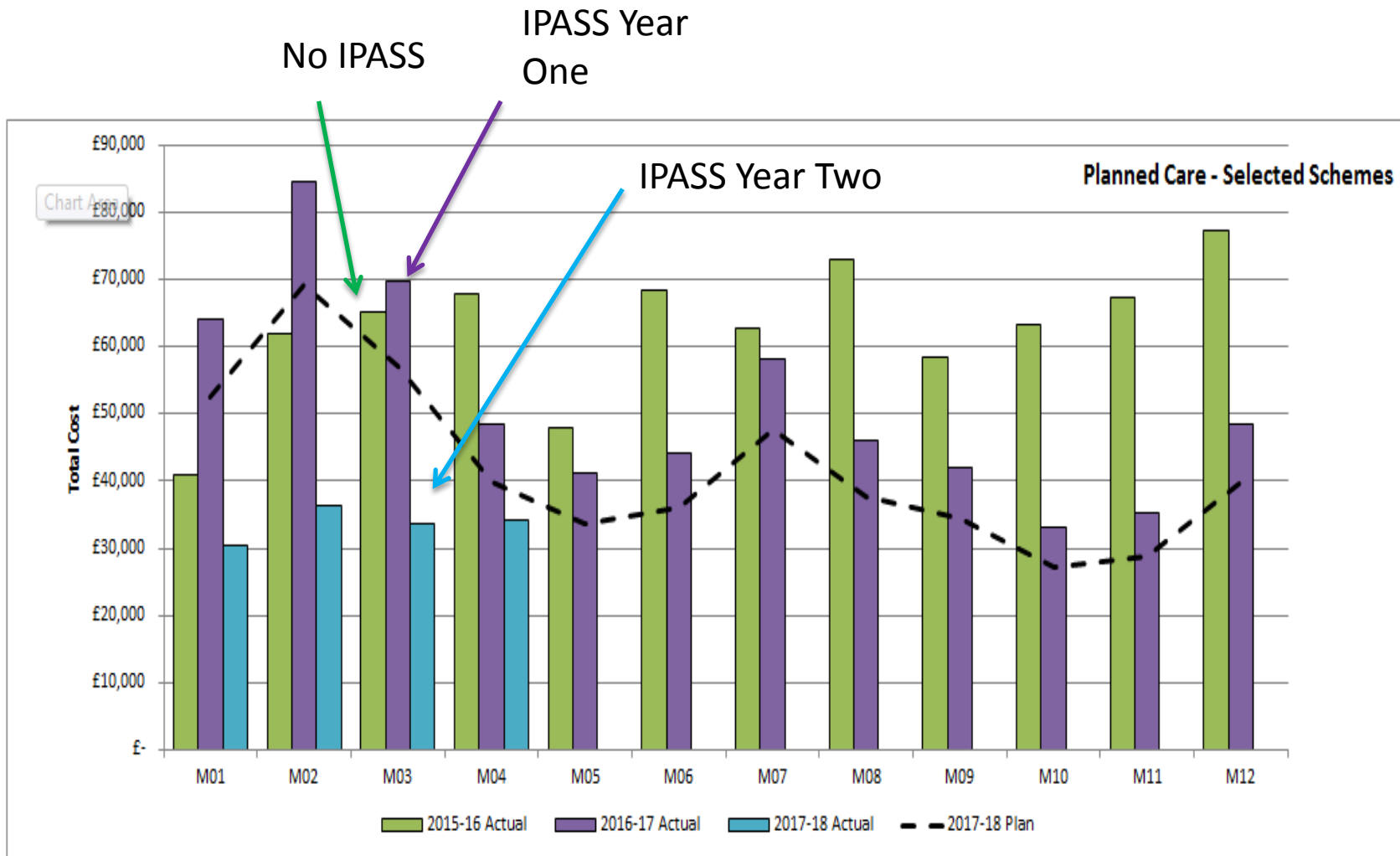
IPASS Pain Pathway



* see separate process map for IPASS - spinal arm

Future services to be planned

IPASS Financial Performance



Total Savings so far = £344,877

Spreading Good Practice and Collaborative Working

- IPASS was introduced prior to November 2016 release of NG59 NICE Guidance for Lower Back Pain
- Disseminated through regional and national networks
- IPASS Toolkit
 - used within other areas of the UK
 - a template for West berks ACS

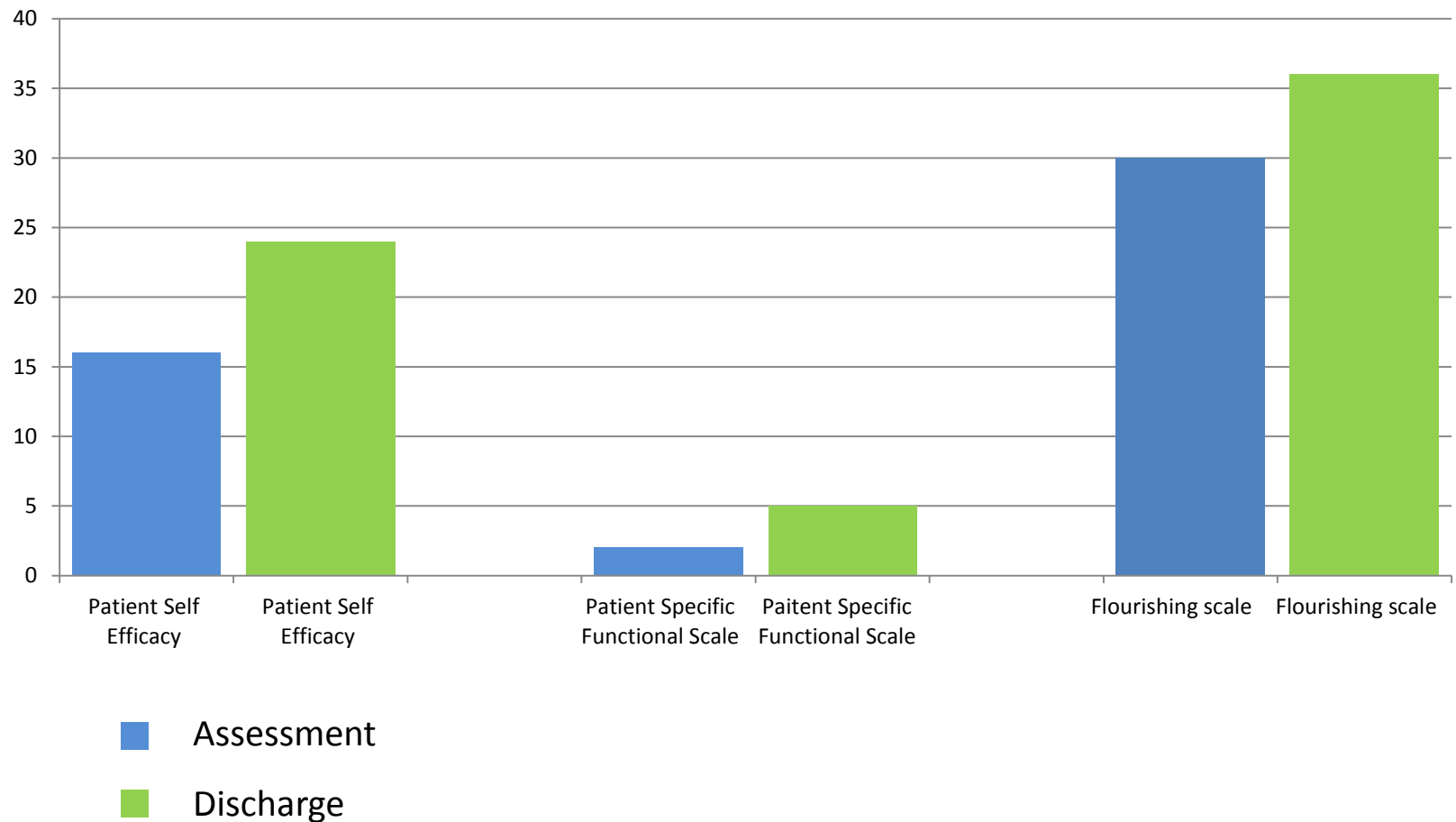
Our patients views

**PATIENT
VOICE...**



IPASS Pain Outcomes

Outcomes for all patients in IPASS pain September 2016 to September 2017



Challenges

- Short up and running time
- Recruiting adequately trained specialist staff
- Scheduling
- Space for staff

Benefits > Challenges

IPASS Contacts

- IPASS Operational Manager: Anna Wylie/Fiona Ockwell

Anna.wylie@berkshire.nhs.uk

fiona.ockwell@berkshire.nhs.uk

IPASS: IPASS@berkshire.nhs.uk

01189 324 610

- CCG MSK Lead: Dr Rupert Woolley

rupertwoolley@nhs.net

- Rheumatology Consultant: Dr Toni Chan

Antoni.Chan@royalberkshire.nhs.uk

- Pain Consultant Lead: Dr Deepak Ravindran

rdeepak@nhs.net