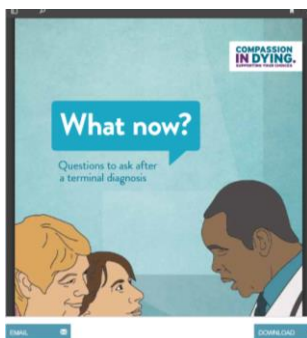


## National Headliners

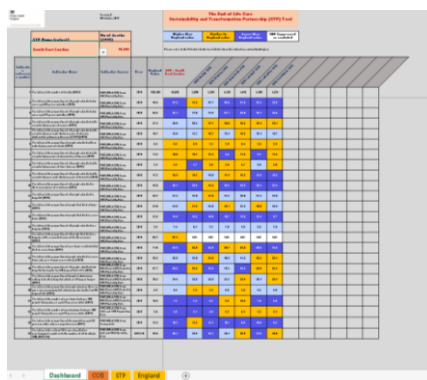
**Compassion in Dying releases “What now?”- Questions to ask after a terminal illness”:** This new resource is designed to help people to make informed decisions and ask questions about their treatment and care, to help them live well in the time they have left. “What now?” may also be helpful for health and care professionals working in a range of settings, as well as people living with terminal or life-changing illness and their families.



Access the resource [here](#)

**Now available new “End of Life Care data to inform Sustainability and Transformation Partnerships (STPs)”: Updated Tool and Metadata Guide:**

The National End of Life Care Intelligence Network (NEoLCIN) have developed a spreadsheet that includes the most recently available data for 24 indicators presented at STP and CCG level, and includes the number of deaths, the age, cause and place of deaths, data describing hospital admissions near the end of life together with information on the number of care home beds and use of palliative care registers by GP practices.



Access this [link](#)

**National End of Life Care (EoLC) Bulletin:** NHS England EoLC have created their own monthly bulletin. If you wish to receive future issues directly, you can [subscribe via the NHS England website](#). If you would like to contribute an article for upcoming issues please email [england.endoflifecare@nhs.net](mailto:england.endoflifecare@nhs.net).

## End of Life Bulletin December 2017

**The Good Grief Project:** Their mission is to support families grieving after the untimely death of a loved one, particularly the death of a child. By encouraging a creative response to grief and looking for new ways of expressing the pain of loss with various art forms and media, a therapeutic channel can be offered.



For more information [here](#)

**NEoLCIN launch new products on Care home bed provision and potential EoLC need in people aged 75 or older in England:**

This accumulation of resources is to inform end of life care planning in the Care Home Setting. It includes two briefing papers, a slide set and a new domain in the EoLC Profiles.



Access the website [here](#)

## Regional Updates

**Save the date:**

Free HEE and TV SCN Workshops on:

- **Tuesday 27<sup>th</sup> March 2018**, Holiday Inn Maidenhead – Capacity, Care planning and Human Rights (TBC).
- **Tuesday 8<sup>th</sup> May 2018**, Venue TBC – “Is there a ceiling to medical care?”