

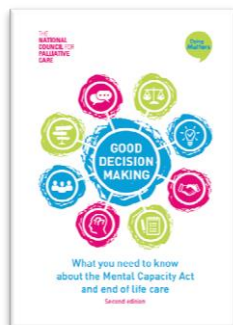
## National Headliners

**Hospice UK releases “No Painful Compromise”:** Hospice UK in partnership with NCPCC has released their recent guide for commissioners and providers to improve pain management for people dying at home.



Download the Guide [here](#)

**NCPC publishes revised Mental Capacity Act Guidance:** with the previous edition published 10 years ago, this revised version “**Good Decision Making: What you need to know about the Mental Capacity Act and end of life care**” is intended for both people approaching the end of life and their families and carers, and staff working in health and care. Download [here](#)



**Dying Matters in Wales launches new Advance Care Plan Website:** developed in partnership with NHS Wales, NCPCC, Hospice UK and the Digital Legacy Association. View [here](#)



**NHS England EoL Webinar:** If missed the first time, there is an opportunity to view the last webinar again:

- Palliative and End of Life Care for Children and Young People listen to the [recording](#)

## End of Life Bulletin June 2017

**Public Health England Resource-Strategic Health Asset Planning and Evaluation (SHAPE):** SHAPE is a web-enabled, evidence-based application which helps to inform and support the strategic planning of services and physical assets across a whole health economy:

- By linking national datasets for clinical analysis, public health, primary care and demographic data and enabling interactive investigations by, Providing Trusts, CCGs, GP practices and Local Authorities. View [here](#)



## Regional Updates


**What Matters to Me: a Human Rights approach to end of life care free workshops:** at the [Duchess of Kent Hospice](#) are open to anyone working in health or social care.



To book for your place via the links below:

- [Registered Workforce Workshops:](#)  
11th, 18th, 28th September 2017
- [Non-registered Workforce Workshops:](#)  
14th and 25th September 2017

Contact [gina.king1@nhs.net](mailto:gina.king1@nhs.net) for more information.

 **SOBELL HOUSE** *Oxford Centre Education & Research Palliative Care:* Full range of courses available including Sage & Thyme to view go to [www.sobelleducation.org.uk](http://www.sobelleducation.org.uk)

Working together in partnership to improve quality and care  
at the end of life in the Thames Valley