

South Central Medical Directorate Conference: Past, present and future

Dr Shahed Ahmad

Medical Director

NHS England (South Central)

Our team leaders

Shahe
Medico



**Aarti
Chapman**

Associate
Director
TV SCN and
Senate

Julie McCann

Head of
Pharmacy/
CDAO

**Ljuba
Stirzaker**

Deputy
Medical
Director

Marion Lynch

Deputy
Medical
Director, STP
Workforce

**Frances
Fairman**

Head of
Clinical
Programmes

Iona Neeve

Head of
Performance &
Revalidation

Sue Frankland

GP Appraisal
Lead

An amazing year

- Berkshire East reduced hypertension prevalence gap by 6000 in 6 months
- We can and do achieve some of the best results in the world



2018



University College Hospital



1 year on: NHS ability with emergencies



Christine Blanshard

First Conference – January 2017

HOST
OF
LOCAL
STARS



HELEN BEVAN



JOHN ROBSON



JACKIE DAVIDSON



ALF COLLINS



MATT KEARNEY



SUSAN JEBB

Second conference – June 2017

- Biggest and most ambitious - 5 plenary talks, 20 breakout sessions, 73 speakers in total, 20 session chairs, 12 exhibitors, 200 delegates



**SIR BRUCE
KEOGH**



DAVE EVANS



**DOMINIQUE
ALLWOOD**



**MAGGIE
MACISAAC**



DAVE CHURCH



NIGEL FOSTER

Third Conference – Population Health

- Shakiba Habibula
- Julian Brookes

Presentations from all our conferences are on the TVSCN website: www.tvscn.nhs.uk

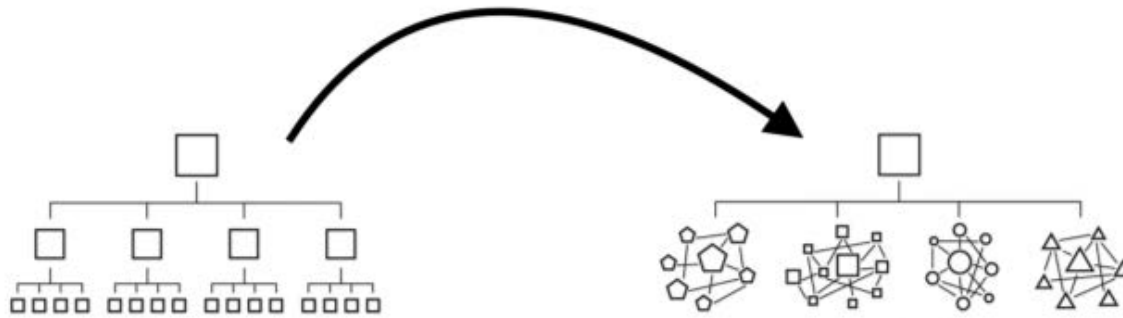
What do these have in common ?



Team of teams

- Poorly equipped enemy were defeating a much better trained, better equipped and larger task force.
- Because it was a network and communicated very well and was resilient.
- Train the front line, empower the front line, make sure the front line has all the relevant intelligence, listen to the front line, learn from failure

Team of teams

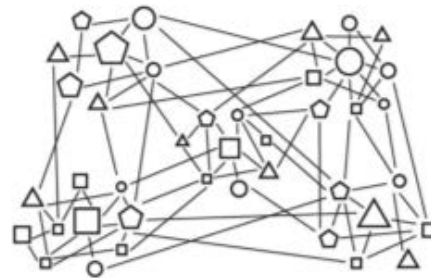


Command

A traditional top-down structure. The connections that matter are between workers and their managers.

Command of Teams

Small teams operate independently but still within a more rigid superstructure



Team of Teams

The relationship among teams resembles the closeness among individuals on those teams.

Leadership development

- Train leaders well
- Give them the knowledge, skills and networks they need to succeed
- Allow them to continuously learn and develop



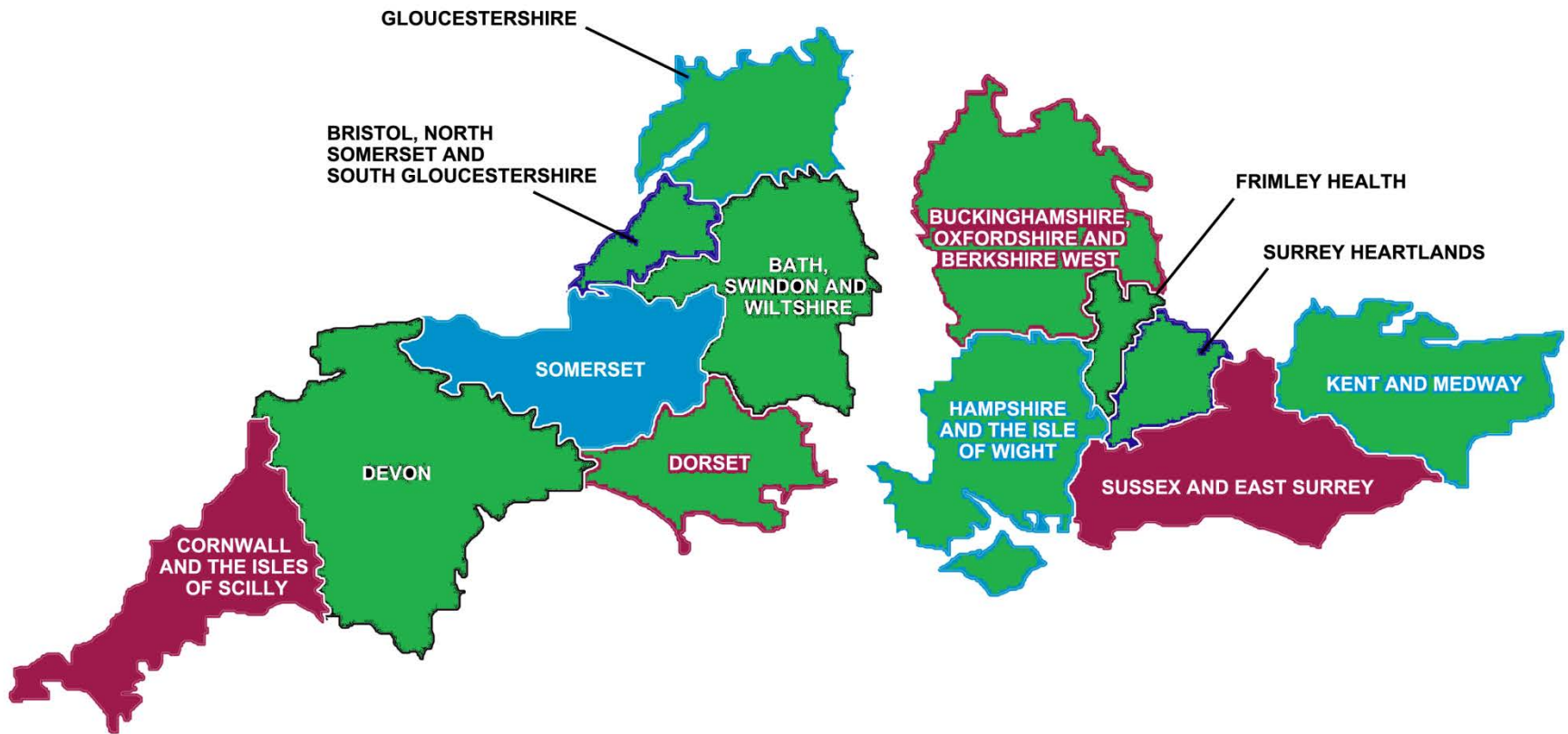
Connecting people across a large geography and population of 4.2 million

- South Central Leadership Forum
- South Central Senior Appraisers
- South Central Clinical Leadership Development Programme
- South Central Medical Directorate Conferences



What next?

- New Geographies
- Hampshire and Thames Valley
- South West North



What adds value across a 4.2 million population?

- Leadership forum
- Senior appraisers
- Leadership development
- Sharing best practice across the patch
- Bringing in global experts
- Showcasing our collective excellence to the world

Areas for development

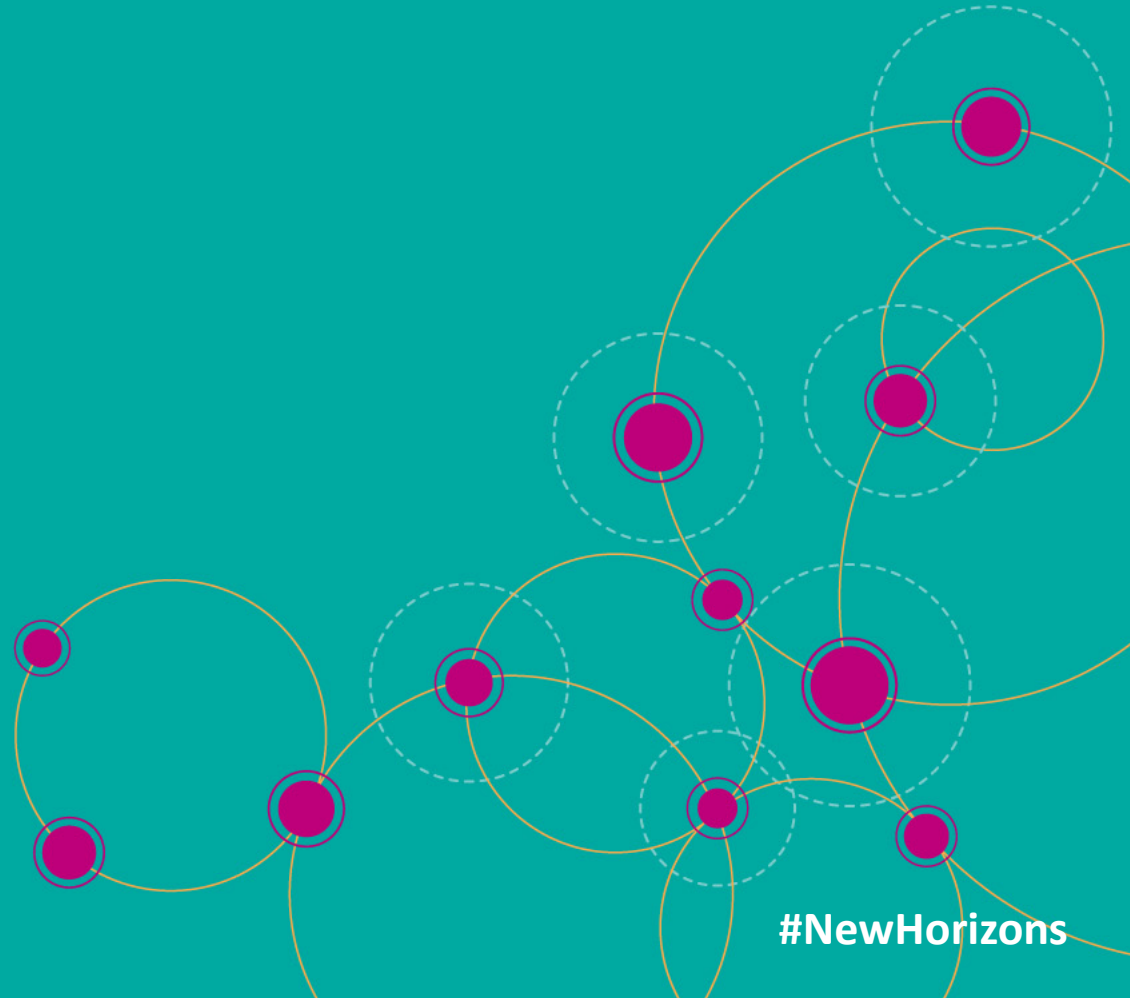
- Multidisciplinary leadership development
- Supporting non medical/non nursing leaders
- Coordination between ALBs/regulators
- Working more closely with NHS Trusts
- Celebrating shared success
- Leaders across the patch need to lead locally. How do we check in and support?

Today's conference

- Genomics
- Artificial Intelligence
- Innovation
- Salisbury



Thank you



#NewHorizons